

**Legend :**

- P1 ● Platform preferred location
- P2 ⊕ Platform alternative location
- ID-point
- Pipeline
- Territorial border
- EEZ border
- - - EEZ border (not official)

Projection: Mercator WGS84

Platform	Easting	Northing
P1	20,1268	58,4203
P2	19,6654	57,7769

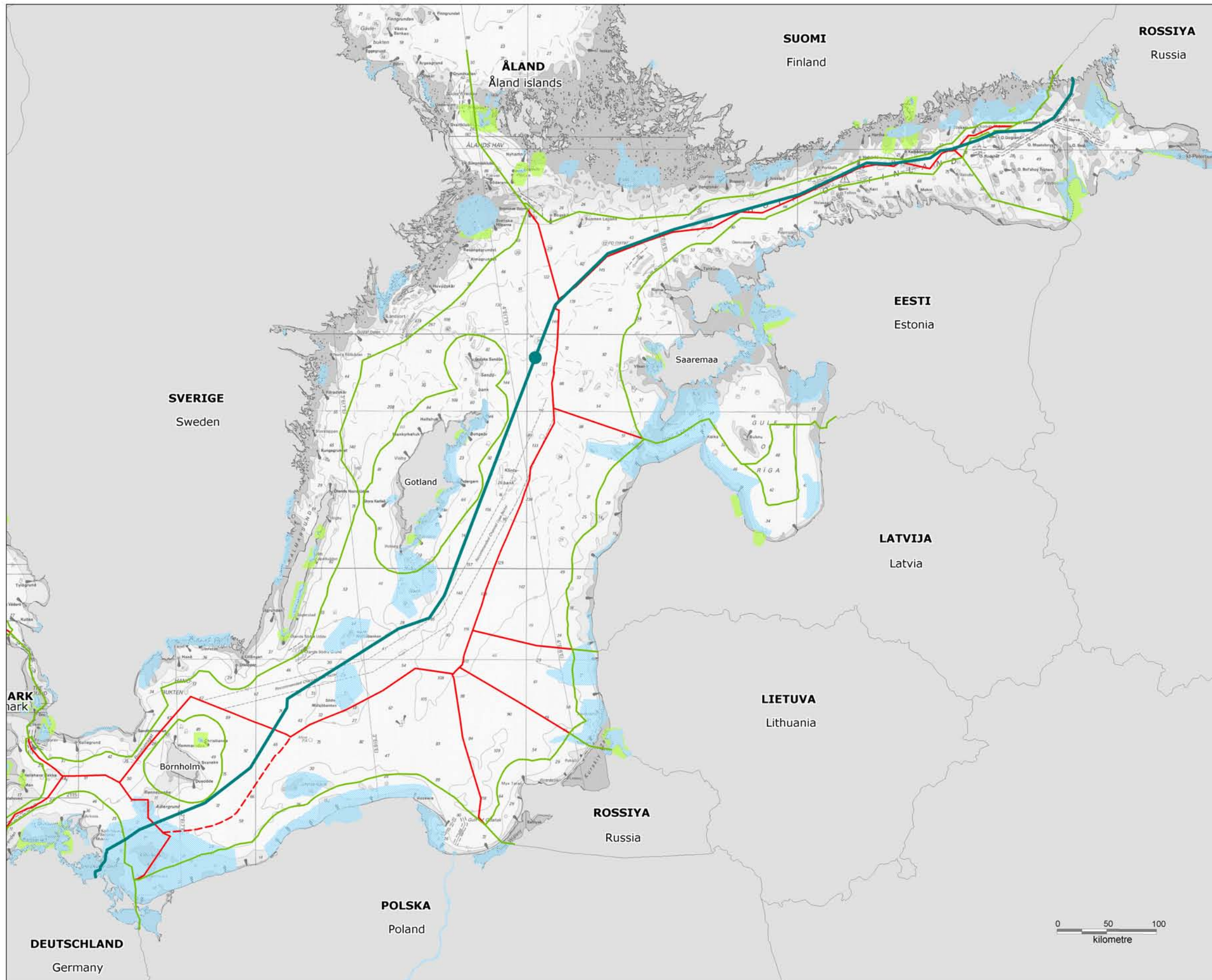
ID	Easting	Northing
1	28,0733	60,5267
2	28,0898	60,5018
3	28,0547	60,4141
4	27,8032	60,2367
5	27,4783	60,1452
6	26,9532	60,1300
7	26,6730	60,0699
8	26,2917	60,0041
9	26,1250	59,9917
10	25,9700	59,9367
11	25,3666	59,8916
12	25,0333	59,9000
13	24,0333	59,6633
14	22,1672	59,3981
15	21,2000	59,2167
16	20,4217	58,8250
17	18,7936	56,5241
18	18,5700	56,3384
19	18,1134	56,2500
20	16,4717	55,6667
21	16,4633	55,5933
22	15,9249	55,0866
23	15,2533	54,7861
24	14,2875	54,5567
25	14,0834	54,4749
26	13,8041	54,3809
27	13,8009	54,3574
28	13,7895	54,3512
29	13,7806	54,2894
30	13,7081	54,2354
31	13,7070	54,2117
32	13,6325	54,1948
33	13,6330	54,1607
34	13,6398	54,1468

Ref.:  
North European Gas Pipeline (NEGP)  
Baseline study, June 2006 (Draft)

Edition: 2  
Date: 20061023  
Prep: BEH  
Control: JLA  
Case no.: 6671024

**Dwg. 3.1**

**Coordinates of pipeline route**



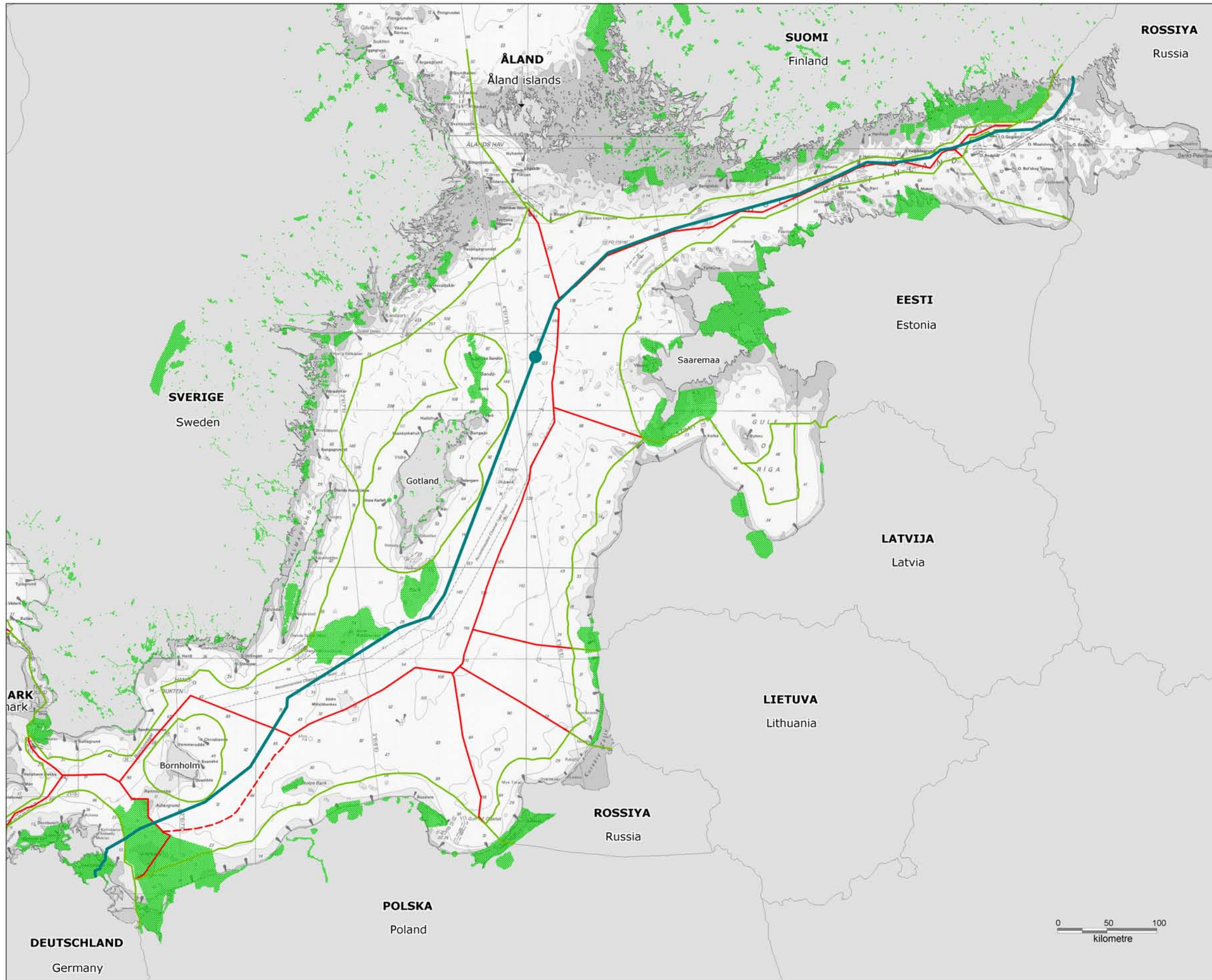
- Legend :**
- Important bird areas
  - Other bird areas
  - Territorial border
  - EEZ border
  - EEZ border (not official)
  - Platform
  - Pipeline

Ref.:  
 North European Gas Pipeline (NEGP)  
 Baseline study, june 2006 (Draft)

Edition: 2  
 Date: 20061023  
 Prep: BEH  
 Control: JLA  
 Case no.: 6671024

**Dwg. 6.1**

**Important Bird Areas (IBA)  
 and other bird areas**



**Legend:**

- Natura 2000
- Territorial border
- EEZ border
- EEZ border (not official)
- Platform
- Pipeline

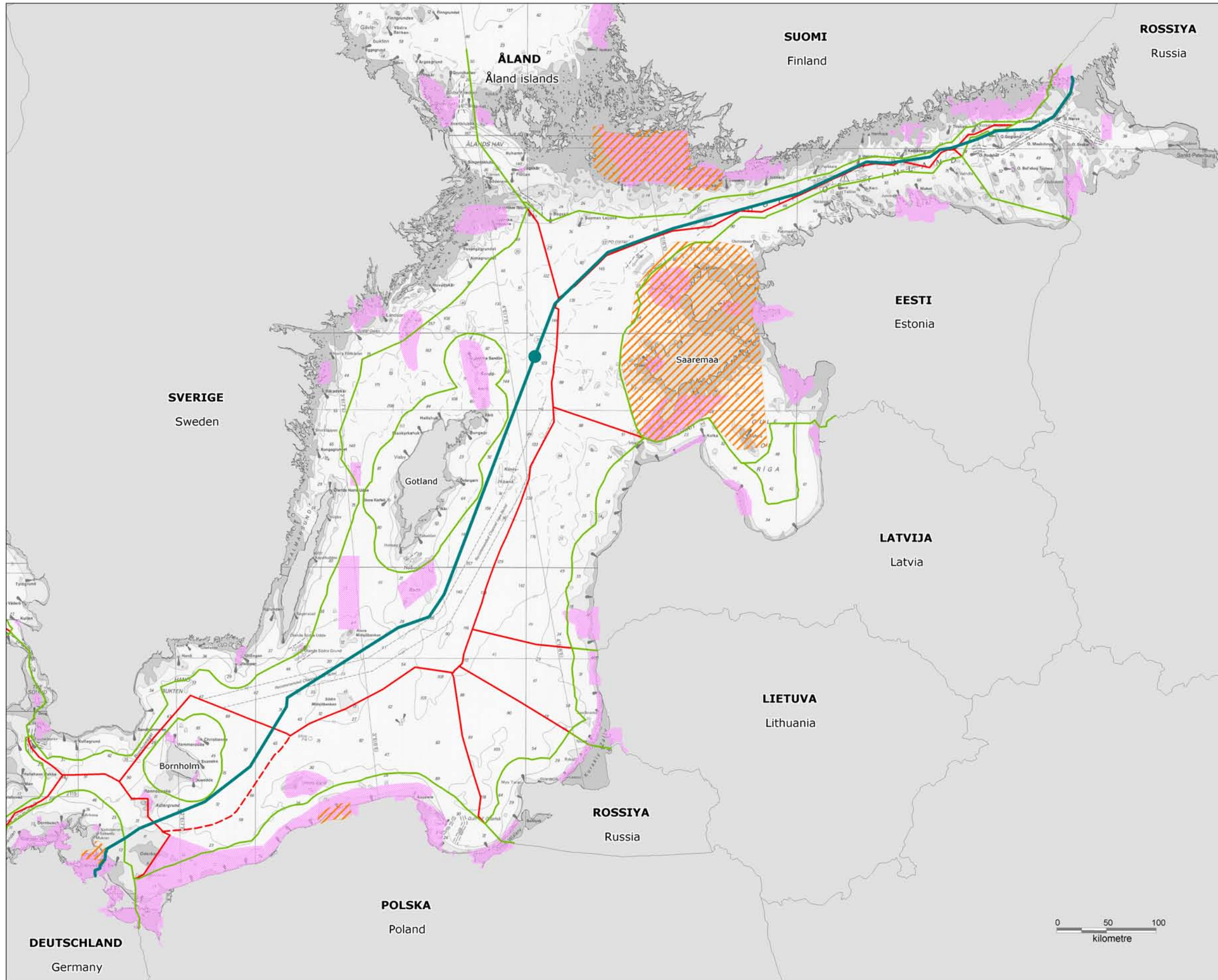
**Note:**  
Ramsar areas, Special Protection Areas (SPA) (Birds Directive),  
Special Areas of Conservation (SAC) (Habitats Directive)

**Ref.:**  
North European Gas Pipeline (NEGP)  
Baseline study, June 2006 (Draft)

Edition: 2  
Date: 20061023  
Prep: BEH  
Control: JLA  
Case no.: 6671024

**Dwg. 6.2**

**Internationally Protected Areas  
(Natura 2000)**



**Legend:**

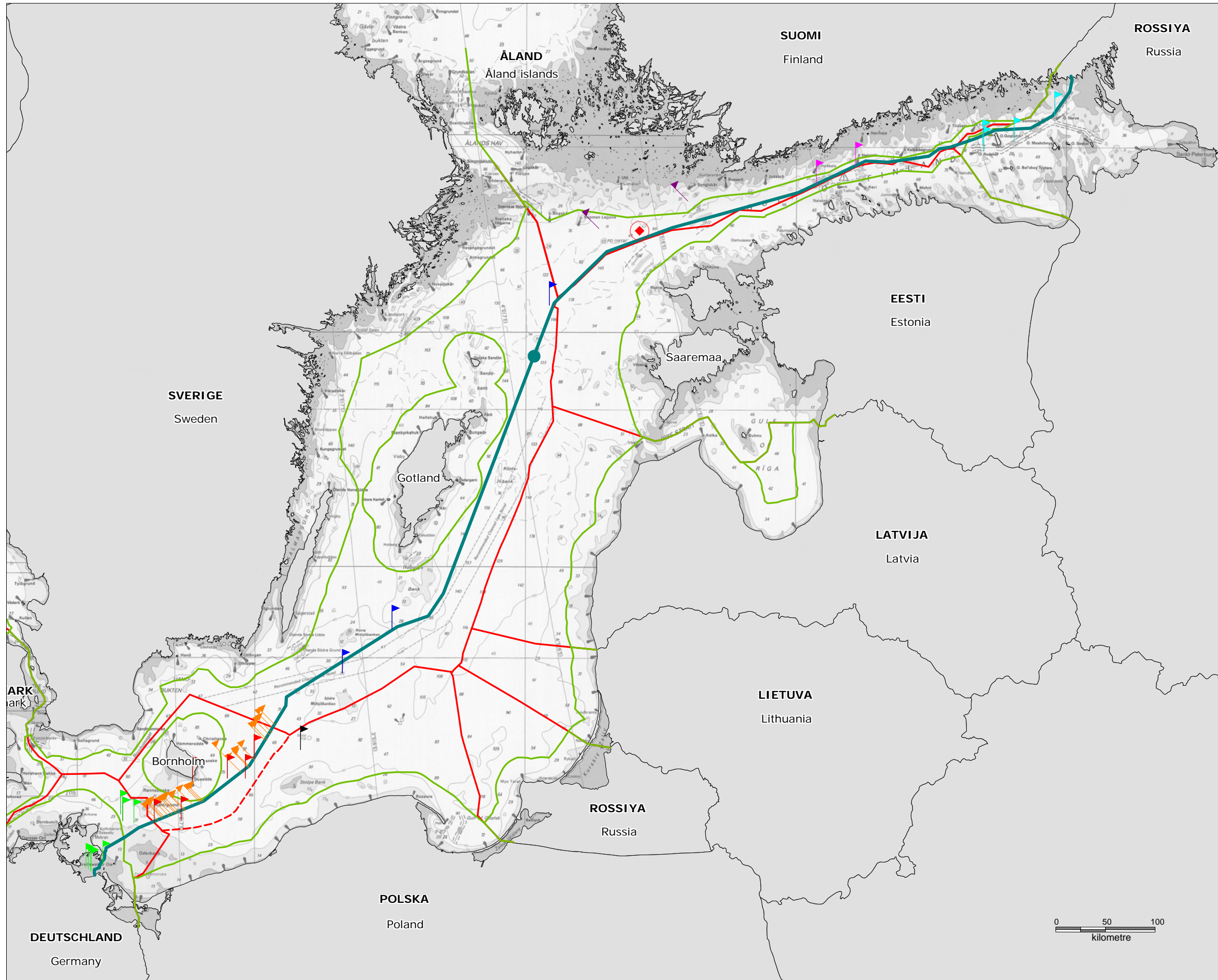
- BSPA (recommended and proposed areas)
- UNESCO
- Territorial border
- EEZ border
- EEZ border (not official)
- Platform
- Pipeline

Ref.:  
North European Gas Pipeline (NEGP)  
Baseline study, June 2006 (Draft)

Edition: 2  
Date: 20061023  
Prep: BEH  
Control: JLA  
Case no.: 6671024

**Dwg. 6.3**

**Baltic Sea Protected Areas (BSPA) and UNESCO biosphere areas**



**Legend :**

- Germany Existing wrecks
- Poland Existing wrecks
- Russia Existing wrecks
- Sweden Existing wrecks
- Denmark Possible wrecks
- Existing wrecks
- Finland Existing wrecks
- Possible wrecks

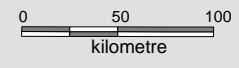
- Memorial "Estonia"
- Territorial border
- EEZ border
- EEZ border (not official)
- Platform
- Pipeline

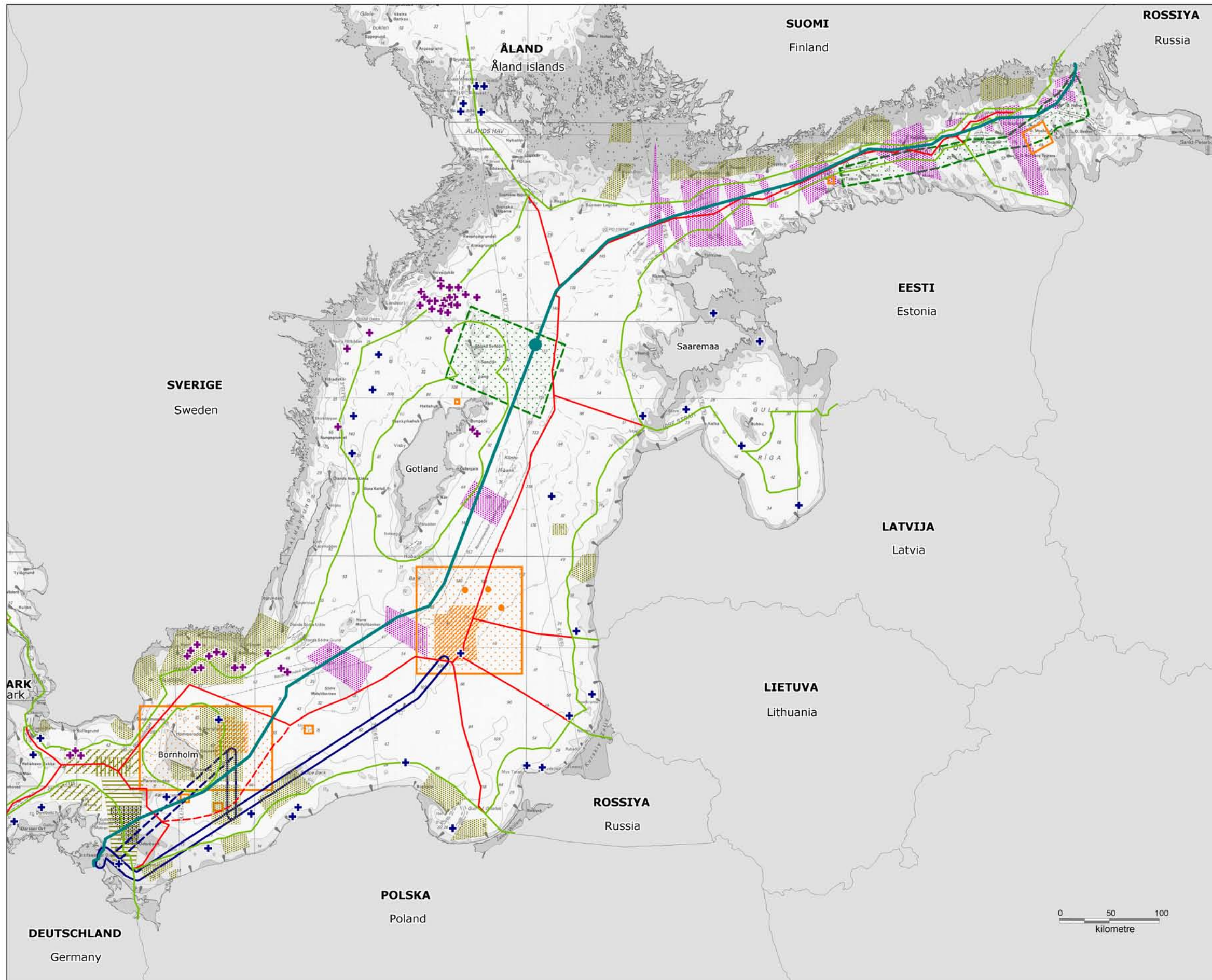
Ref.:  
 North European Gas Pipeline (NEGP)  
 Baseline study, June 2006 (Draft)

Edition: 2  
 Date: 20061023  
 Prep: BEH  
 Control: JLA  
 Case no.: 6671024

**Dwg. 6.4**

**Wrecks and cultural heritage**





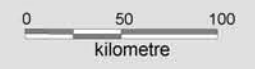
- Legend :**
- Submarine Exercise
  - Firing Exercise
  - Air Force Exercise
  - Other exercise areas
- Chemical and conventional ammunition :
- Dumping area
  - Single dumping
  - Area of risk for dumping
  - Transport routes, official
  - Transport routes, short-cut
  - Abandoned minefields
  - Not detonated explosive charges
  - Mine threat sites
  - Areas of possible appearance of large submerged objects
- Territorial border
  - EEZ border
  - EEZ border (not official)
  - Planned Platform
  - Pipeline

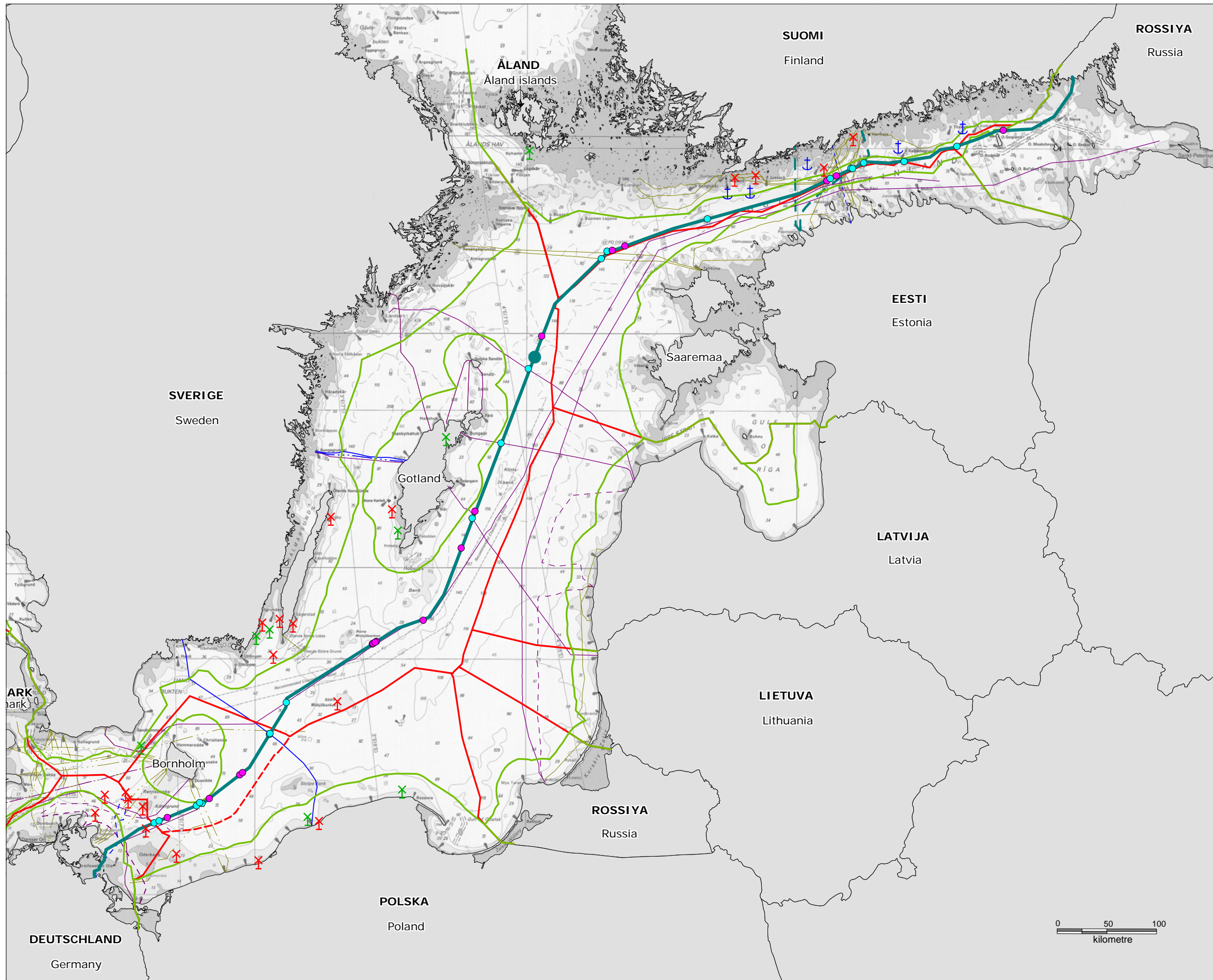
Ref.:  
 North European Gas Pipeline (NEGP)  
 Baseline study, June 2006 (Draft)

Edition: 2  
 Date: 20061023  
 Prep: BEH  
 Control: JLA  
 Case no.: 6671024

**Dwg. 6.5**

**Military exercise areas and dumping sites**





**Legend:**

- Cable:
  - In use 2006
  - In use 2004
  - - - Planned
  - · · Unknown use
  - - - Abandoned 2001
  
- Energicable:
  - In use
  - - - Planned
  - · · Not in use
  
- Windparks:
  - ✕ In operation
  - ✕ Planned
  
- ⚓ Areas of anchoring
  
- Crossing cable
- Possible / unknown crossing
  
- Territorial border
- EEZ border
- - - EEZ border (not official)
  
- Platform
- Pipeline
- - - Pipeline planned (alternative routes) (Baltic Connector)

Note:  
Only cables and pipelines crossing the proposed Nord Stream pipeline route are included

Ref.:  
North European Gas Pipeline (NEGP)  
Baseline study, June 2006 (Draft)

Edition: 2  
Date: 20061023  
Prep: BEH  
Control: JLA  
Case no.: 6671024

**Dwg. 6.6**

**Offshore installation**